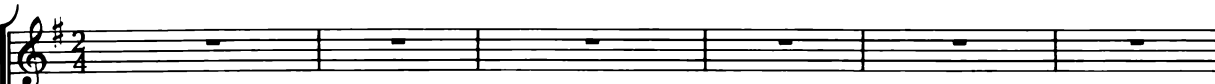
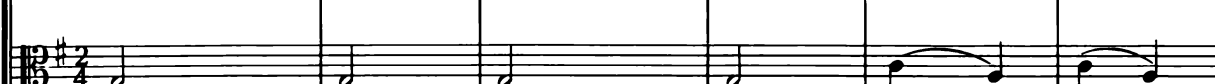


## 19. Aria

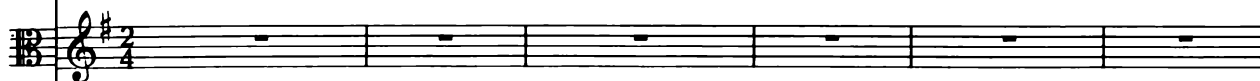
Flauto traverso I



Oboe d'amore I

Oboe d'amore II  
Violino IOboe da caccia I  
Violino IIOb. d.  
c. IOboe da caccia II  
Viola

Alto

Continuo (2 x)  
Organo (bez.)  
Organo

7

5/4 3 5/3 6/4 7/4 8/3 5/3 6/4 7 1/4 6/5 1/4 7 7/5

15

4 3 7 7# 6 6 6 6 7b 6 5 6 8 5b

22

piano

7b 6 5 9 8 5b 7b 6 5 9 8 6 6 5 4 6 4 2 6

Schla-

29

senza l'oboe d'amore II  
pianissimo  
senza l'oboe da caccia I  
pianissimo  
senza l'oboe da caccia II  
pianissimo

fe, mein Lieb

pianissimo

36

ster, ge - nie - - - - - ße der Ruh, schla - fe, mein Lieb - ster, ge -

43

nie - ße der Ruh, wa - che nach die - sem vor al - ler Ge - dei - hen, schla - fe, mein

6/4 7/4 7/4 6/4 7/4 2

50

Lieb - ster, ge - nie - ße der Ruh, wa - che nach die - sem vor al - ler Ge - dei -

7/4 8/3 6/4 2 6 6 6 6 6 5 6 4 5

56

56

forte  
con l'oboe d'amore II

forte  
con l'oboe da caccia I

forte  
con l'oboe da caccia II

forte

hen;

forte

6 6 6 6 4 7 6 6 6 7 5 6 5 4 3 5 4 3 6 5

Detailed description: This system contains measures 56 through 62. It features five staves. The top staff is a grand staff with a treble clef and a key signature of one sharp (F#). The second and third staves are also in treble clef and contain woodwind parts for oboe d'amore II and oboe da caccia I, respectively. The fourth staff is in bass clef and contains the oboe da caccia II part. The fifth staff is a grand staff with a bass clef and contains the bass line. The music is marked 'forte' throughout. The bass line includes a series of fingering numbers: 6, 6, 6, 6, 4, 7, 6, 6, 6, 7, 5, 6, 5, 4, 3, 5, 4, 3, 6, 5.

63

63

Detailed description: This system contains measures 63 through 69. It features five staves. The top staff is a grand staff with a treble clef and a key signature of one sharp (F#). The second and third staves are also in treble clef and contain woodwind parts for oboe d'amore II and oboe da caccia I, respectively. The fourth staff is in bass clef and contains the oboe da caccia II part. The fifth staff is a grand staff with a bass clef and contains the bass line. The music is marked 'forte' throughout. The bass line includes a series of fingering numbers: 9 4, 8 4, 5b, 7b, 6, 5, 9 4, 8 3, 6, 6, 5 4, 6 4 2, 6.

69

pianissimo  
Ob. d'am. II senza l'oboe d'amore II  
pianissimo  
senza l'oboe da caccia I  
pianissimo  
senza l'oboe da caccia II  
pianissimo

schla - fe, mein Lieb-ster, ge - nie - ße der Ruh, schla - fe, mein Lieb-ster, ge - nie - ße der

$\frac{7}{4}$   $\frac{8}{3}$   $\frac{7}{4}$   $\frac{8}{3}$

pianissimo

76

Ruh, wa - che nach die - sem vor al - ler Ge - dei - hen, wa - che nach die - sem vor

$\frac{7}{4}$   $\frac{8}{3}$   $\frac{7}{4}$   $\frac{8}{3}$

74 5 6 5 6 5 8 7 6 5 9 7 5



97

forte  
con l'oboe d'amore II

forte  
con l'oboe da caccia I

forte  
con l'oboe da caccia II

forte

6 4 5 3 7 4 8 3 8 7 6 4 7 4 4 3

105

La - be die

piano

5 3 6 4 7 4 8 3 6 4 7 6 5 6 5 4 3 6 5



114

tr

senza l'oboe d'amore II  
piano

senza l'oboe da caccia I  
piano

Brust, emp-fin - de die Lust, wo wir un-ser Herz er - freu - - - - en, wo wir

6 6 6 4 6 6 7 6 6 7 6 7 6 6 7 6 6 7

121

solo

senza l'oboe da caccia II  
piano

un-ser Herz er - freu - - - - en; la - - - be die Brust, emp -

6 7 6 6 4 6 4 2 6 7 6 6 6 6 5

127

fin - - de die Lust, wo wir un-ser Herz er - freu - - en; la - - - be die

7 6 5 6 6 7 5 6 7 7 # 6 6 4/2 6 5 # 6 5

133

Brust, emp - fin - de die Lust, wo wir un-ser Herz er - freu - - - - -

6 4/2 6 4 7 5+ 6 6 5 9 # 8 4/2 6 6 6 5 6 4 6 5 #

139

forte piano

en; la - be die Brust, emp - fin - de die Lust, wo wir un - ser Herz er - freu - -

7 5 8 4 3 6 4 3 6 4 3 7 6 6 4 3 6 4 3 5 6 5 9 8 6 8 7 6 5

146

en!

7 6 8 7 9 6 5 6 7 6 6 4 5

Da capo

### 20. Evangelista

Recitativo

Tenore

Und al - so - bald war da bei dem En - gel die Men - ge der himm - li - schen Heer -

Organo (2x) Organo (bez.) Organo

scha - ren, die lob - ten Gott und spra - chen:

3 6 5 6 4 5